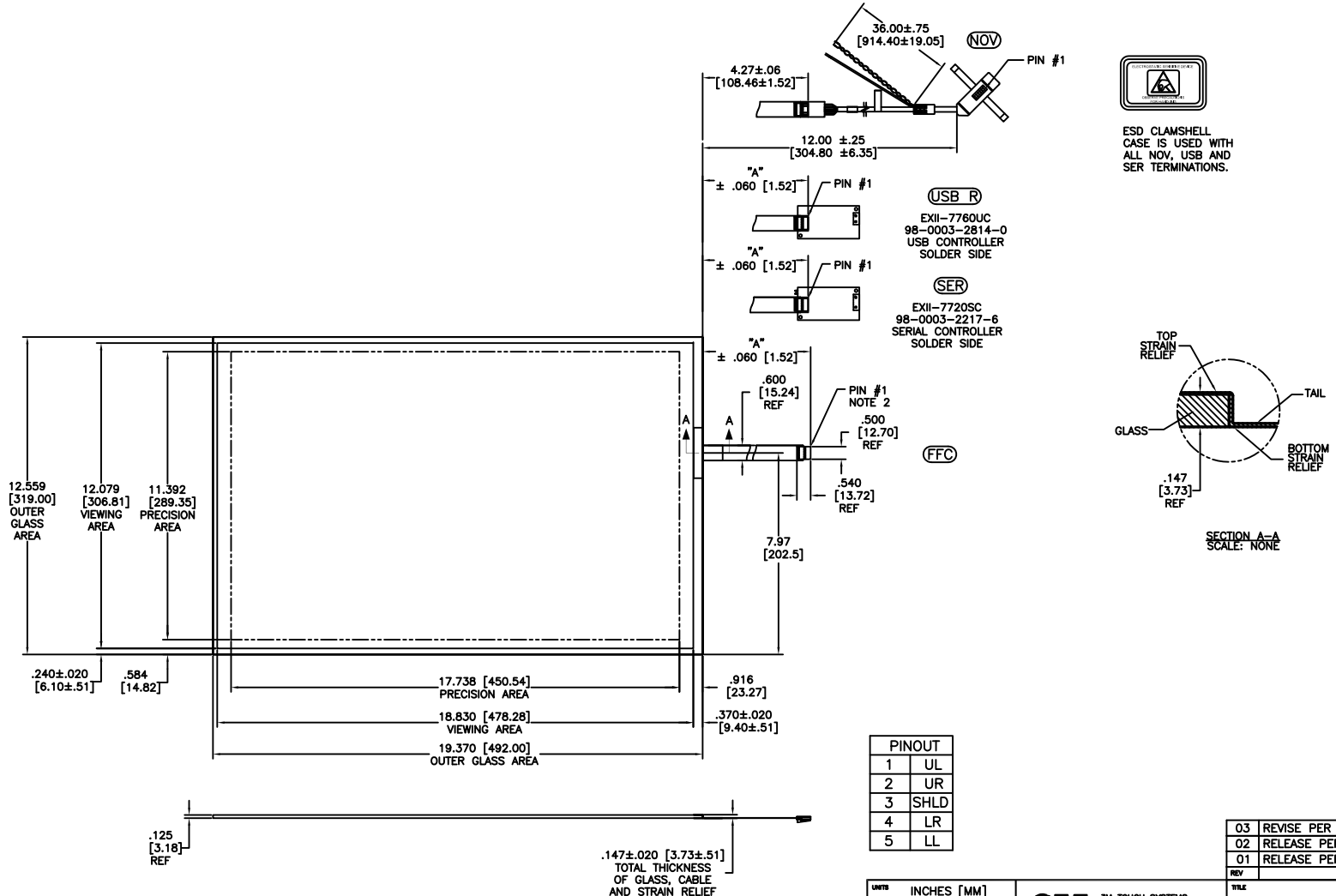
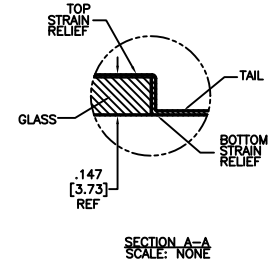


OGA DIAGONAL: 23.09 [586.4]  
 VA DIAGONAL: 22.37 [568.2]  
 PA DIAGONAL: 21.08 [535.5]

TOP LEVEL NUMBER	SKU 98 NUMBER	TYPE	DM "A" (TOTAL GLASS TO CONNECTOR)	A/G FINISH	PROD SPEC
17-9311-205	98-0003-2209-3	FFC	8.00" [203.20]	AG500	23655
17-9311-206	98-0003-2731-6	NOV	SEE DWG	AG500	23655
17-9311-227	98-0003-2734-0	SER	8.00" [203.20]	AG500	23655
17-9311-226	98-0003-3052-6	USB R	8.00" [203.20]	AG500	23655



ESD CLAMSHELL CASE IS USED WITH ALL NOV, USB AND SER TERMINATIONS.



SECTION A-A  
SCALE: NONE

PINOUT	
1	UL
2	UR
3	SHLD
4	LR
5	LL

- NOTES:
- WEIGHT OF GLASS IN GRAMS: 1196±10%
  - 5 PIN AMP CONNECTOR LATCH STYLE HOUSING P/N: 487526-4 TIN CONTACTS P/N: 2-487406-4 HOUSING ORIENTED WITH LATCH DOWN

UNITS INCHES [MM]

TOLERANCES UNLESS OTHERWISE SPECIFIED

.X ±  
 .XX ±.03 [.76]  
 .XXX ±.015 [.38]  
 ANGLES ±1°

THIRD ANGLE PROJECTION

DO NOT SCALE DRAWING

SCALE 1 = 1

**3M** 3M TOUCH SYSTEMS  
 METHUEN, MA  
 USA

© COPYRIGHT 2004  
 THIS DOCUMENT IS COPYRIGHTED PROPERTY OF THE 3M COMPANY AND MAY NOT BE REPRODUCED WITHOUT 3M WRITTEN PERMISSION OR USED OR DISCLOSED FOR OTHER THAN 3M AUTHORIZED PURPOSES.

DRAWN AH 4/07

REV	CHANGE NOTICE	DATE	DRW
03	REVISE PER CO 030452	6/09	SB
02	RELEASE PER CO 028687	2/08	ACM
01	RELEASE PER CO 027279	4/07	AH

TITLE  
**MARKETING DRAWING**  
**SCT32NN 22.37" W**

CAD FORMAT AUTOCAD SHEET 1 OF 1

SIZE C DOCUMENT NO. 34079-MKT REV 03