

Surface Acoustic Wave TouchScreen Product Specification

PRODUCT TYPE	Surface Acoustic Wave TouchScreen
MODEL NAME	SCTL4B17AR-N17 with ST6001SU
CUSTOMER	/
VERSION	1.0

APPROVED BY	REVIEWED BY	PREPARED BY
ZHANGPING	KOULONG	GUOQING

CATALOG

1. Revision History	3
2. Specification	4
3. Appendix	5
4. Operation Platform	6

1. Revision History

Item	Version	Date	Description	Owner
1	1.0	2014-03-03	First release	GuoQing

2. Specification

Touchscreen Parameter		
Touch Screen Dimensions(mm)	External Dimensions	362×299
	Display Area	342×276
	Glass Thickness	4
	Ratio(Length Vs Width)	4:3
Material	Pure Glass	
Light Transmission	90%	
Anti-glare	Gloss: 80+/-15	
Surface Hardness	Moh's hardness rating of 7	
Electrical Parameter		
Voltage	+12VDC,normal (+11V to +13VDC)	
Current	60mA, typical, supply must be capable of sourcing, 250mA, minimum	
Power	Average power consumption is 0.72W at +12VDC,	
Noise parameter	Total noise and ripple requirement must be less than 50 mV (p-p) for frequencies above 1 MHz	
Interface	EIA 232E (Serial RS-232), DCE configuration. 8 Data Bits, 1 Stop Bit, No Parity, Full Duplex Baud rate: 9600	
	USB1.1	
Touch Parameter		
Resolution	4096×4096	
Conversion Time	Approximately 10.4 ms per coordinate set (including transmitting time)	
Touch Activation Force	80g	
Environment Parameter		
	Touchscreen	Controller
Operating Temperature	-20℃～+50℃	0℃～+65℃
Storage Temperature	-40℃～+70℃	-20℃～+85℃
Operating Humidity	40℃ at 90% RH, noncondensing	
Operating Altitude	3000m	
Reliability	MTBF is greater than 300,000 hours per MIL-HDBK-217-F2 using the parts stress calculation method for ground benign environment with an ambient temperature of 25℃	
ESD	Per EN 61000-4-2: Contact discharge 4kV, air discharge 8kV	
Flammability	The printed circuit board substrate is rated with 94V0	
ROHS	The Touch System including TouchScreen, Controller and Cable is ROHS compliant	
Agency Approval	UL	
	Systems incorporating GT touchscreens, controllers, and cables have been approved for CE marking	
	Systems incorporating GT touchscreens, controllers, and cables have been approved to FCC Class A compliance	
Controller Characteristic		
Type	The touchscreen controller of GeneralTouch Company is ST6001SU	
Construction	Multi-layer surface-mount design with internal ground plane for EMI suppression	
Dimensions	85×62×12 (mm)	

3. Appendix

Fig1: SCTL4B17AR-N17

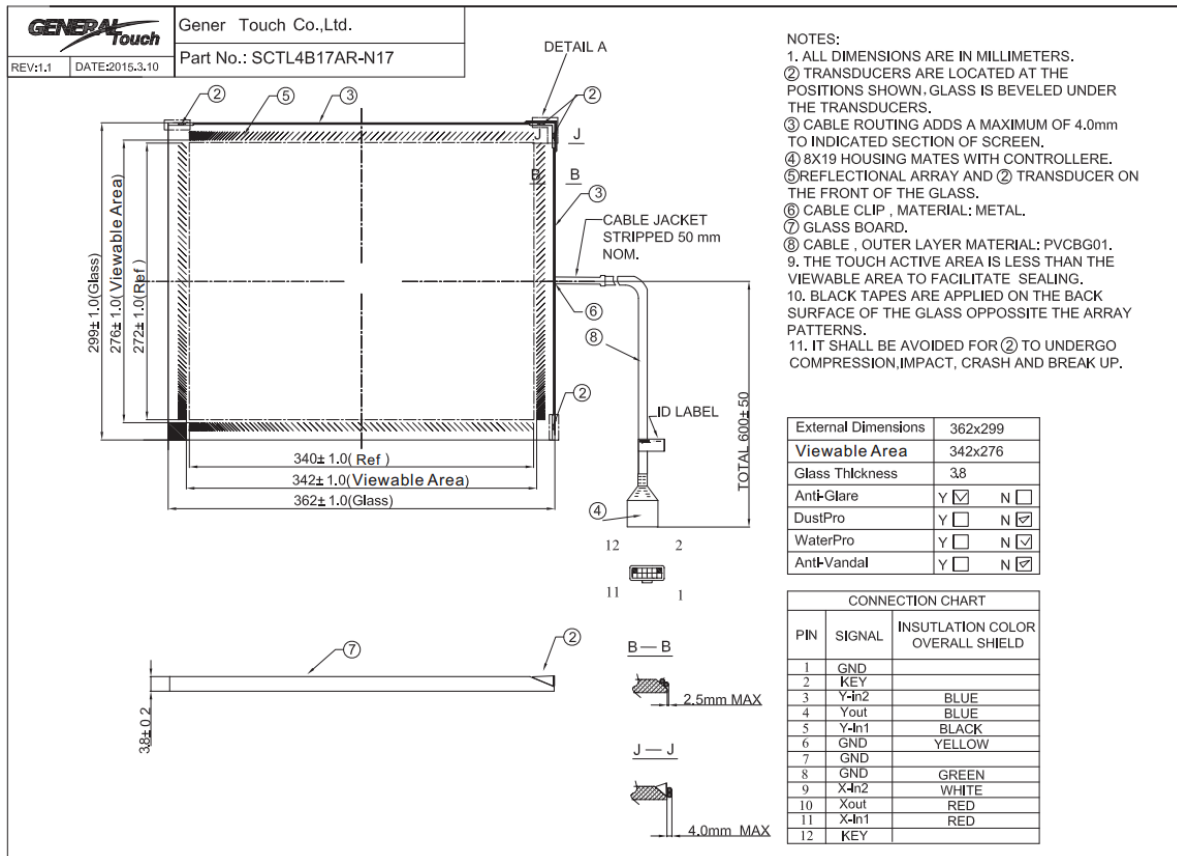
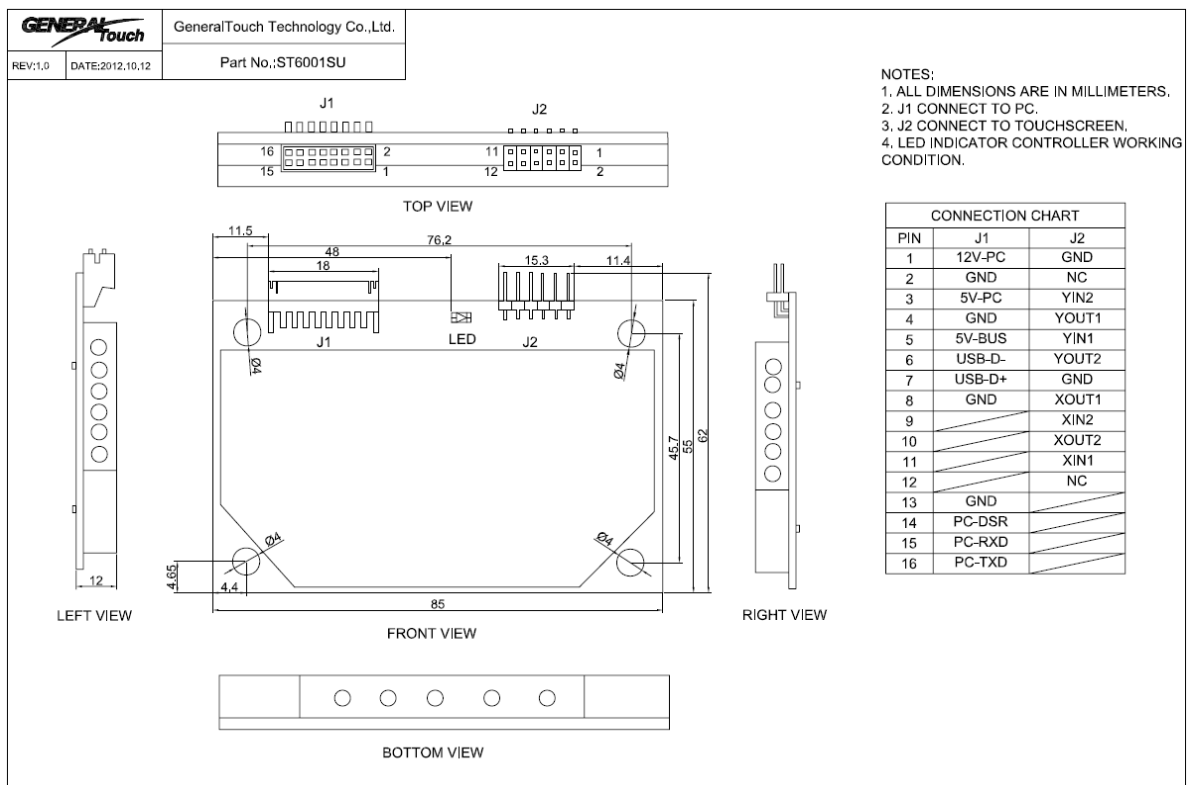


Fig2 : ST6001SU



4. Operation Platform

Windows 98/ME/

Windows 2000/XP/Vista/7

You can download these drivers from our website:

www.generaltouch.com

General Touch Co., Ltd. reserves the right to change or update the information contained in this document without notice, and also has the right to discontinue or limit the production and distribution of any products