




## 10.4” Open Frame SAW Touch Monitor

### 10.4” Surface Acoustic Wave Touch Monitor      Open Frame

 This is a series of GeneralTouch' s open frame touch monitor. It not only inherits the advantages of traditional SAW products, such as high reliability, high durability, high clarity and scratch resistance, but also can provide dust proof, water proof, vandal proof, anti-glare optional. The LED backlight module provides a slim look, longer life, and lower power consumption for the touch monitor. It's the best choice for various public applications such as self-service terminals, kiosks, interactive digital signage etc.

#### Features & Applications

##### Features

- ◆ water proof/vandal proof/anti-glare/privacy filter optional
- ◆ Pure glass touchscreen delivers superior image quality
- ◆ Various mounting options (Side Mount VESA Mount 75 mm )
- ◆ Continues to work even with scratches
- ◆ Easy integration and low maintenance
- ◆ Excellent performance, accuracy and reliability with drift-free operation

##### Applications

- ◆ Self-service terminals
- ◆ Ticketing machines
- ◆ Gaming machines
- ◆ Retail Point-of-Sale (POS) terminals
- ◆ Transportation Point-of-Information (POI)
- ◆ Office automation

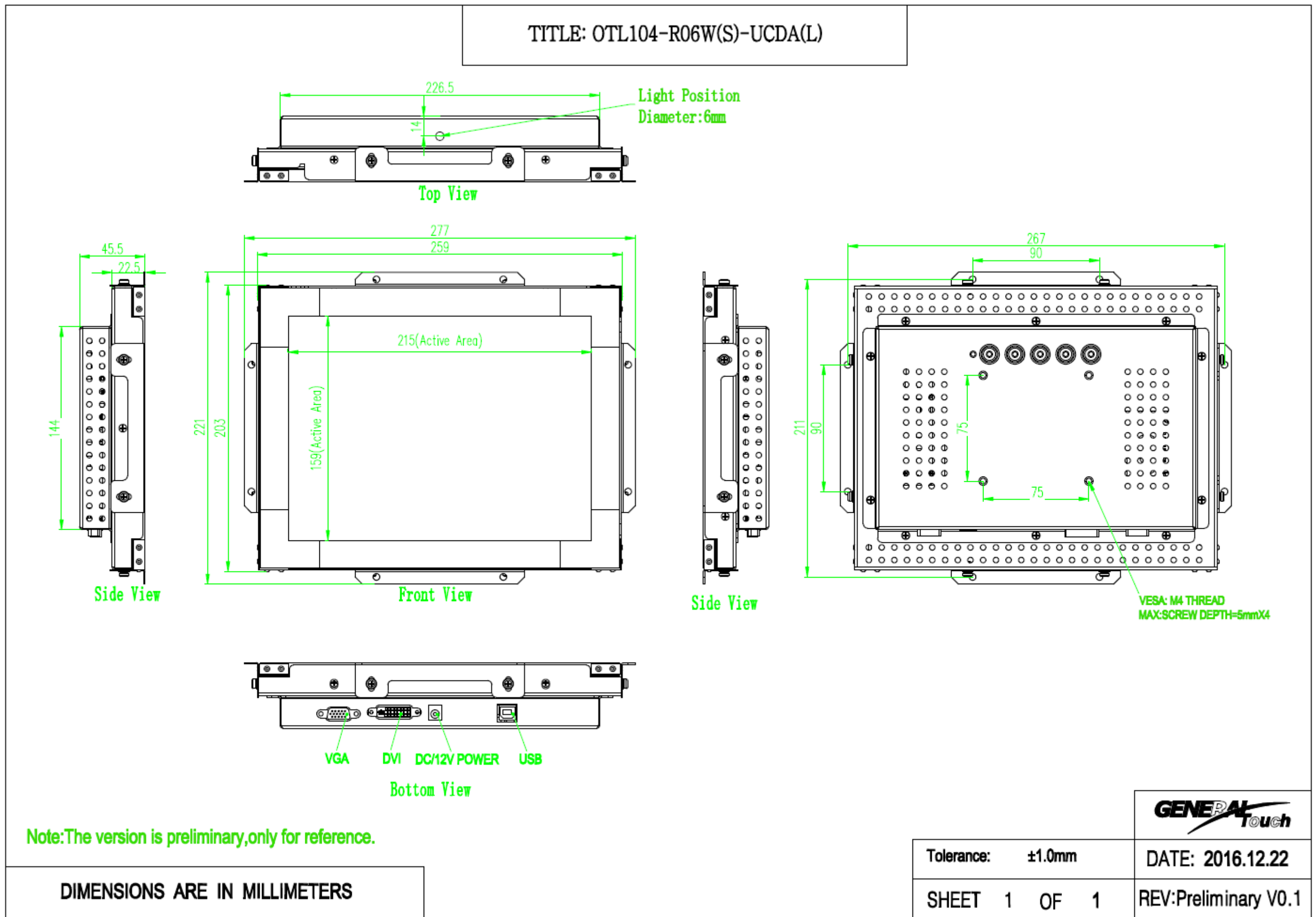
# SPECIFICATIONS

Name	10.4 Inch Open Frame Touch Monitor	
Model	OTL104-R06WS-UCDA	
<b>LCD Panel Parameters</b>		
• Display Ratio	4:3	
• Backlight Type	LED	
• Active Display Area	211.2mm*158.4mm	
• Pixels H x V	1024*768	
• Response Time(typ.)	16ms	
• Support Color	16.7M	
• White Luminance(typ.)	350cd/m2	
• Contrast Ratio (typ.)	900:1	
• Viewing Angle(cr≥10)	Horizontal: 150°(75°/75°) (Typ.)	Vertical: 150°(75°/75°) (Typ.)
• Vertical Frequency(typ.)	60Hz	
• Led life time(typ.)	30000Hrs (Brightness of LED becomes to 50% of its original value)	
<b>Touch Screen Parameters</b>		
• Touch Technology	Surface Acoustic Wave(SAW)	
• Active Touch Area	215mm*159mm	
• Glass Thickness	6mm	
• Dust proof	IP5X	
• Water proof	IPX4	
• vandal proof	Impact Resistance: Strength can meet IEC60950 ball drop test (0.5 kg, 50 mm diameter ball dropped from height of 1.3 m)	
• Anti-Glare(optional)	Gloss :80± 15	
• Touch Response Time	10.4ms	
• Light Transmission	90%	
• Surface Hardness	Mohs' hardness rating of 7	
• Touch-Screen Interface	USB	
<b>Touch Monitor Parameters</b>		
• Mounting Options	Side Mount, VESA Mount, 75mm*75mm	
• Video Input Format	VGA/DVI	
• Outline Dimensions(without bracket)	259.0mm*203.0mm*45.5mm	
• Power Supply	External Adapter:100-240VAC,50-60Hz Input Voltage Range: +12VDC ± 5%	
• On Screen Display (OSD)	Control(back): Power, Menu, Up, Down, Auto	
• Power Consumption(Max)	25W	
• Packing size	TBD	
• Weight	Monitor/Shipping (Approximately):TBD	

## Touch Monitor Parameters

- Temperature Range Operating: 0°C-40°C,storage: -20°C-60°C
- Humidity (Non Condensing) Operating: 20%-80%,storage: 10%-90%
- MTBF 50000Hrs(Mean Time Between Failures)
- Agency Approvals FCC/CE
- Warranty 3years(LED panel 1 year )

Touch Monitor Drawing



Item	Version	Date	Description	Changed by
1	0.1	2016/12/22	First Release	Long Kou
2				
3				

Go to [www.generaltouch.com](http://www.generaltouch.com) for more products and information, or contact us.  
 General Touch Co., Ltd. reserves the right to change or update the information contained in this document without notice, and also has the right to discontinue or limit the production and distribution of any products.

Tel: 0086-28-85124114  
 Fax: 0086-28-85124115  
 E-mail: [sales@generaltouch.com](mailto:sales@generaltouch.com)  
<http://www.generaltouch.com>