

# **A2 Assembly Manual**

**2012. 10. 29**

**R&D, Nexio Co., Ltd.**



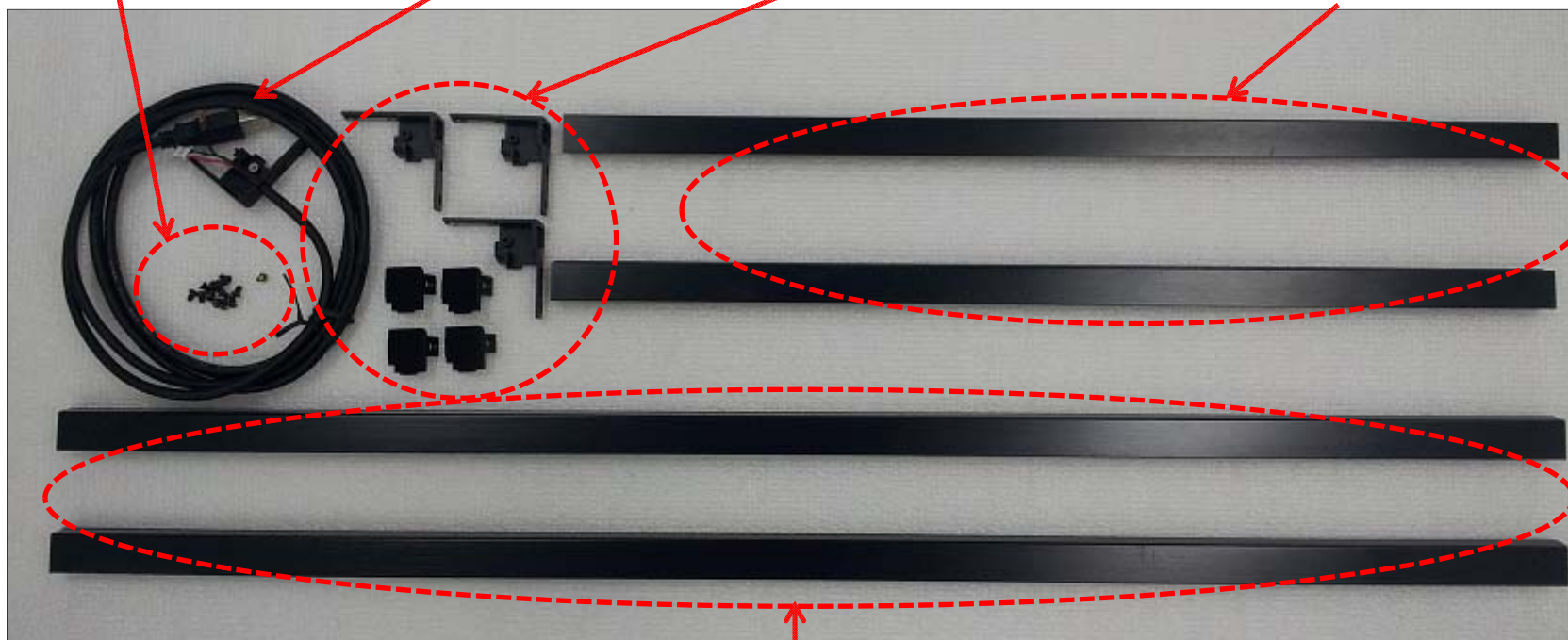
## Product Components

**FM3\*4 Screw : 20EA**  
**RM2.6\*3 Screw : 1EA**

**USB Cable +  
Corner Set: 1EA**

**Corner : 3EA**  
**Corner Cover : 4EA**

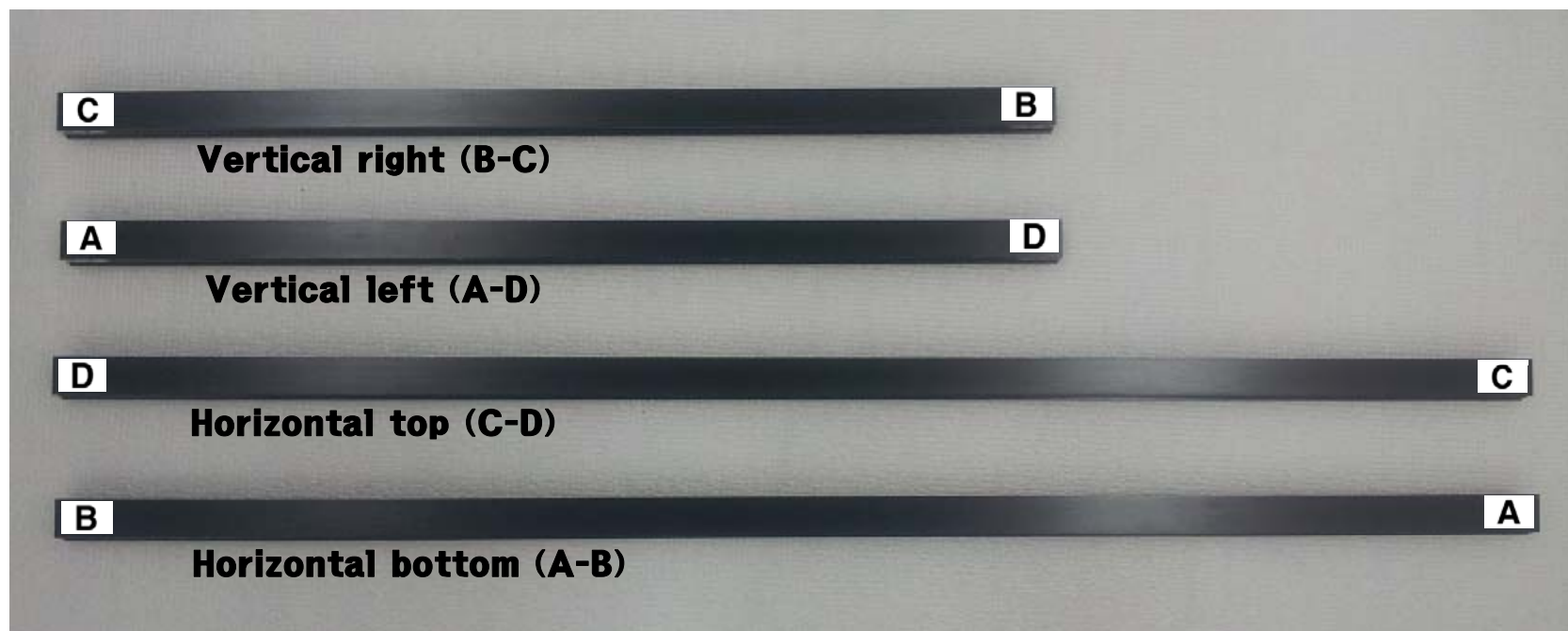
**Vertical Frame :  
2EA**



**Horizontal  
Frame: 2EA**

Please read this manual carefully prior to the assembly  
Horizontal Frame : Each 2EA for top and bottom/ Vertical Frame : Each 2EA for left and right  
A, B, C, D stickers are attached back of each frame.

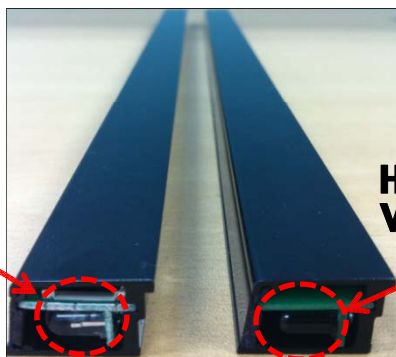
Photo of stickers back of each frame(This photo is back of each frame)



Horizontal Frame : Each 2EA for top and bottom / Vertical Frame : Each 2EA for left and right  
Back is to be attached A, B, C, D stickers on each frame

Put frames on the table and follow the below instruction to assemble

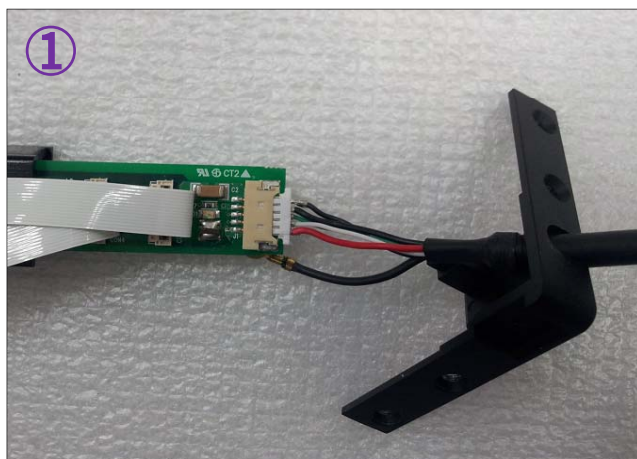
**Transparent LED**  
**Horizon bottom (A-B)**  
**Vertical left(A-D)**



**Black LED**  
**Horizon top (C-D)**  
**Vertical right(B-C)**



Arrange the frame with black LED on the top and the frame with transparent LED on the bottom between horizon frame 2pcs as top photo



Connect connector of USB Cable with transLED PCB of horizon frame bottom as top photo

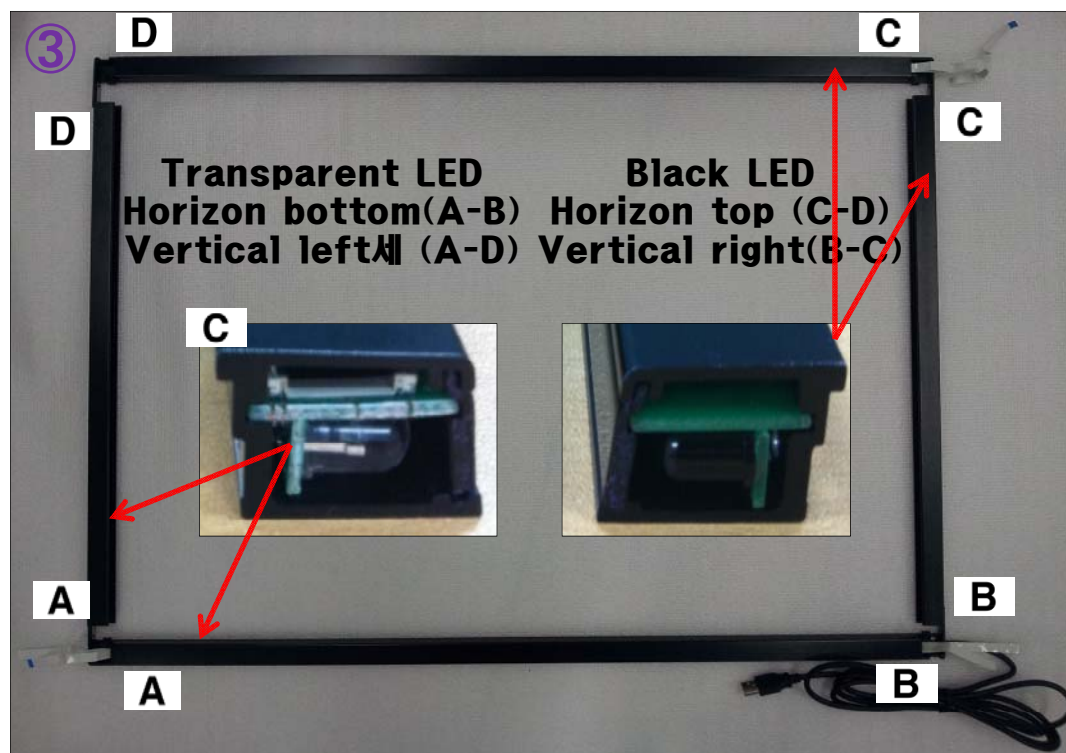


After inserting ground wire with RM2.6\*3 screw into ring socket then assembly with corner as top photo





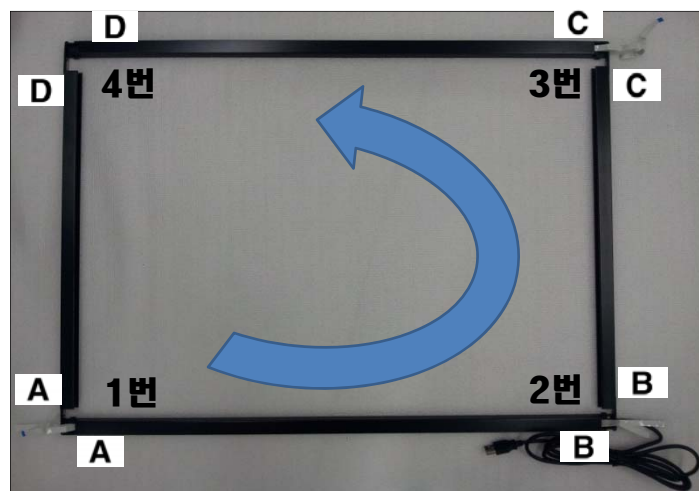
Assembly both below edge of horizon frame and corner with FM3\*4 screw as next photo  
Assembly both top edge of horizon frame as same way



**Note: Do not confused of the left frame and the right frame**

Arrange horizon frame 2EA on top and bottom as top photo as well as arrange each frame you can see the front  
(Arrange the frame with USB cable on bottom)  
Arrange vertical frame 2EA on left and right

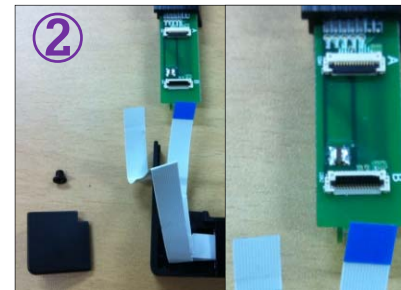
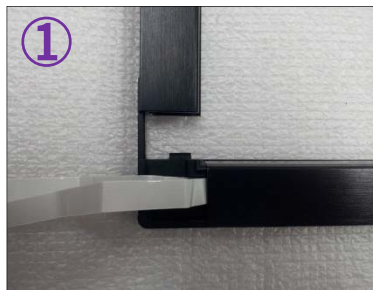
The order to assemble corners is counterclockwise



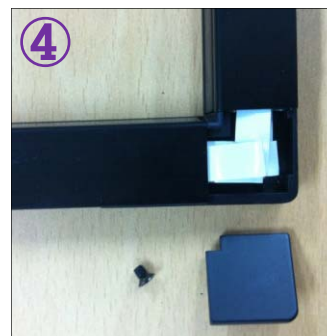
**No.1 (A-A)  
Left bottom  
assembly**



**Pay special attention to prevent  
the FCC from being caught by the  
cover**



The blue FFC is for A Connector, and the white FFC is for B Connector



Arrange the FFC

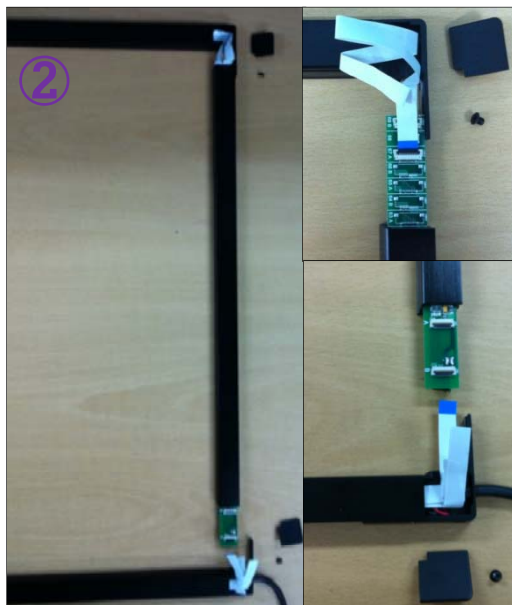
Fold the FCC at corner

Close the cover and screw it with FM3\*4

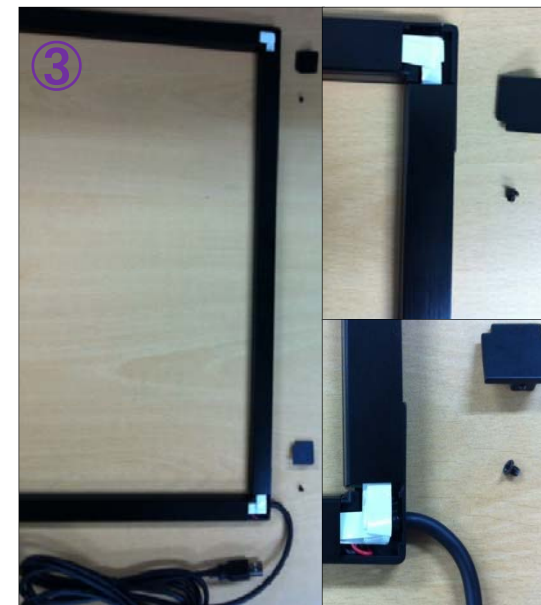


Use FM3\*4 screws to assemble the frame with the corner

## No.2(B-B) and 3(C-C) Right top/bottom assembly



Get the PCB out of the vertical frame as picture and connect the blue FCC with A connector and the white FCC with B connector



Fold the FCC neatly as above after arranging FCC



Use FM3\*4 Screws to assemble the frame with the corner. Close the cover and screw it with FM3\*4



**No. 4(D-D) Left top  
assembly**



Use FM3\*4 screws to assemble  
the frame with the corner.  
Close the cover and screw it



Completion

Thank you !