

## 46inch Touch Foil Specifications

### Technical Parameters

Model No.	SNT-MCW-TFS-46-ILI
Ratio	16:9
OD Dimension	1065 mm X 615 mm
Active Area	1020 mm X 575 mm (46inch)
Controller Size	90 mmX30 mm
FPC Direction	Short side
Tail Length	40mm
Surface Materials	PET film
Light Transmission	≥89%
Lamination	Permanent
Sensor Theory	Improved Projected Capacitive (Micro Copper Wire)
Sensor Qty	4K
Touch Accuracy	±2mm
Touch Function	Multi-touch, 10 points
Sensing Thickness	Maximum 12mm glass
Calibration	Automatic
Response Time	<10ms
Refresh Rate	120FPS
Lifetime	9 years
Working Temperature	-15°C~+75°C
Humidity	0%~95%RH (non-condensed)
Compatibility of OS	Windows XP , Windows 7, Windows 8, Windows10(32 / 64 bits)
	MAC OS X Lion
	Linux
	Android 4.0 above
Way of connection	USB 2.0
USB cable	1200mm
Drive type	Drive-free
Working Voltage	3.3VDC
EMC	EN 61000-6-1:2007, EN 61000-6-3:2007+A1:2011

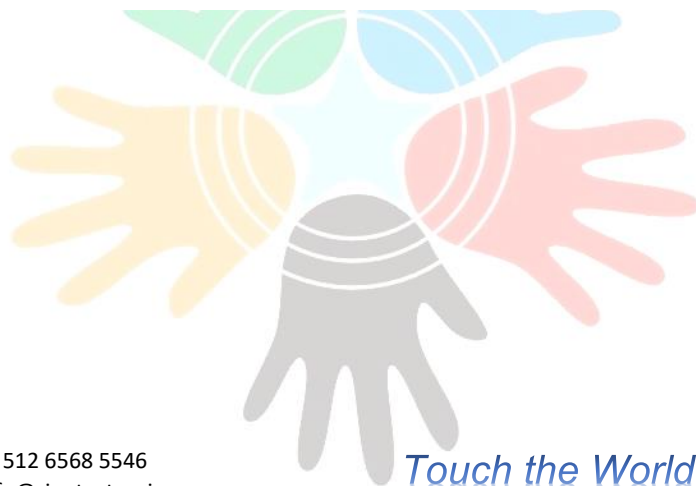
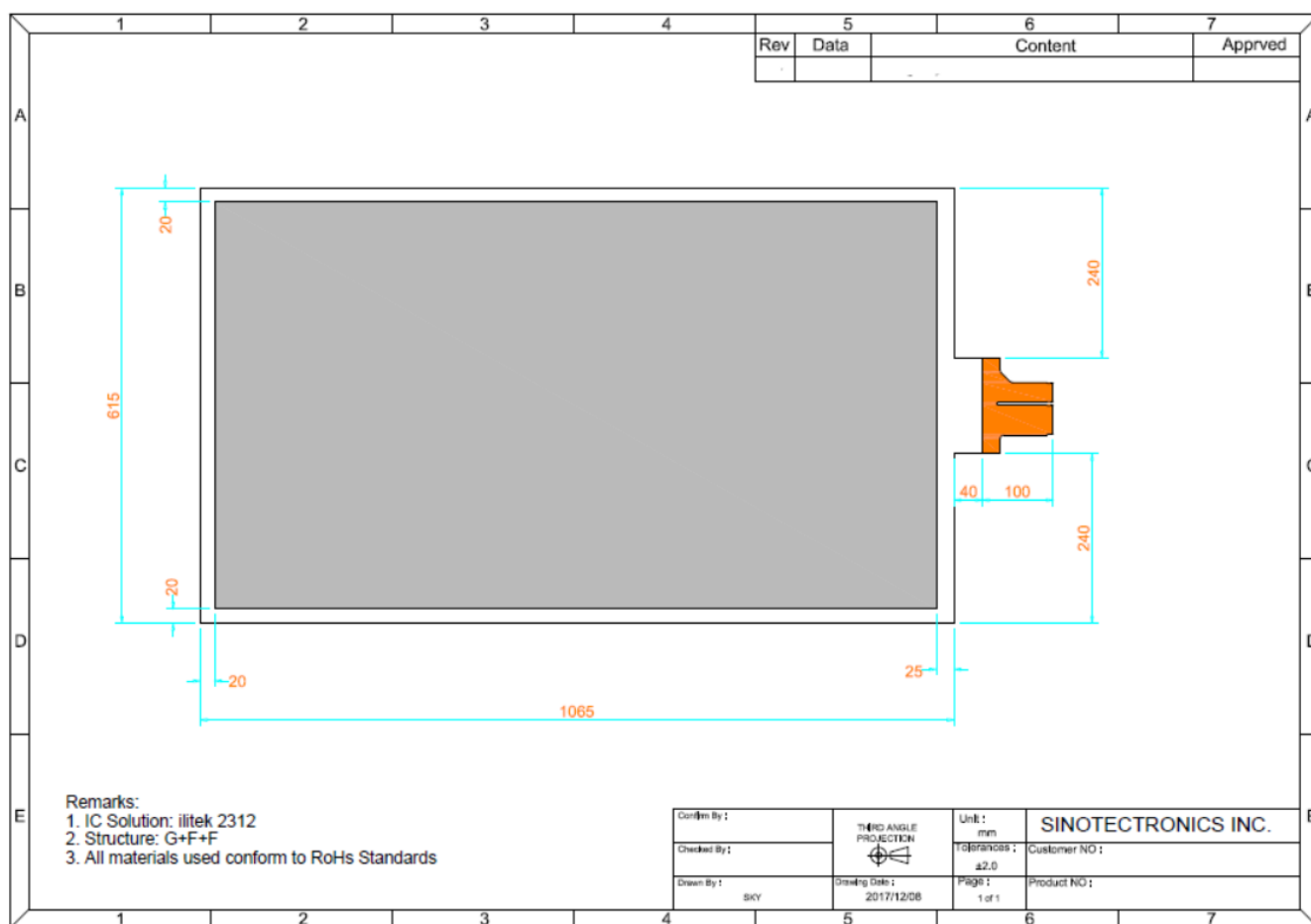
Power Consumption	<0.5W
Certifications	CE (GR2107/010845CC), FCC (STE120904208), RoHS (UST-ROHS-0969)

## Product Dimension

### 46inch Touch Foil Dimensions

Standard: Short side FPC

Unit: mm





### ILITEK 2312 Controller Dimension

